

BARTON

BESPOKE

MADE IN ENGLAND

Sustainability



MADE IN GREAT BRITAIN

Our commitment

In the heart of Derbyshire, England, our workshop is home to a team of skilled craftspeople and designers who turn the ideas of Architects and Designers into reality, crafting luxurious furniture made-to-order and hand-finished by skilled craftspeople.

A passion for excellence is a dedication we share with our colleagues in every department, influencing and informing a collective response to each client's brief. Our team of designers, engineers, project managers, upholsterers, and carpenters are all inspired by a single aim: delivering the best design and exceptional quality.

Sustainable Furniture



Made to last a lifetime

Here at Barton Bespoke, a responsible and sustainable approach is at the heart of everything we do. We craft functional pieces with long-lasting quality and every piece is made to order.

Great design is about more than just the products we make. Sustainability is the core of our business and binds our ecological processes, nature-inspired designs and our team's culture.

We are a team of makers with a passion for handcrafted ethical design, and our goal is to make the very best quality products we can. We create investment pieces that will be passed down and cherished for generations - not furniture that won't last and join landfill the following year.

Responsibly Sourced cont...

We don't take our environmental responsibilities lightly. Here are some of the things you can count on from Barton Bespoke.

Suppliers

We exclusively foster responsible supply chain partnerships with businesses who share our commitments to environment and community.

Timber

We are fully FSC certified and only use high quality, fully traceable timber from carefully managed forests. We're determined to make a positive, environmental impact and have recently committed to planting 14,000 iroko trees annually and are restless in our approach to doing even more.

Frames

Precision technology allows us to minimise timber waste and offcuts are always reused or recycled and even help to heat our factory via industrial burners.

Simple hand assembly techniques during frame construction enables easy disassembly into material components that can be diverted for recycling.

Cushions

Cushions are either partially or wholly composed of recycled content. Whether that be natural fibers such as coir and sheep's wool or with recycled material that was once plastic bottles.



Responsibly Sourced

Foam

All our foam is 100% recyclable and sourced from suppliers who are ISO 14001 Environmental Management certified.

Plastic

There are very few, but any plastic components are made from polypropylene and/or nylon which are both 100% recyclable.

Upholstery

We carefully select fabrics from a range of mills, including those with impressive environmental certifications and ISO 14001. Leather can be sourced from tanneries who use organic dyes and chrome-free processing. Webbing and linings are made from interwoven hemp, both recyclable and biodegradable.

Re-upholstery Service

Our furniture is designed to perform for many years, but we know spaces evolve. We offer a renovation and reupholstery service in order that as little furniture as possible ends up in landfill.

Made to Last

The longevity of our furniture makes it a more sustainable choice from the outset. We offer a lifetime frame guarantee and will accept returns of any furniture for reuse or recycling that has reached the end of its usable life.

Circular Mindset

Barton Bespoke continually invests in state-of-the-art equipment to enable an efficient production line with the smallest carbon footprint possible.

Green Energy

To keep our emissions as low as possible, our factory uses 100% renewable energy. We utilise integrated, intelligent software that monitors consumption and thus helps us increase efficiency and reduce both waste and expense.

Factory Lighting

Following a comprehensive energy consumption review, we replaced almost all factory lighting with LED technology.

Waste

We are constantly assessing our waste management processes. CNC technology has drastically reduced the volume of offcuts since installation. All fabric, foam and timber remnants as well as administration waste, are meticulously collected for recycling. None of our waste goes to landfill.





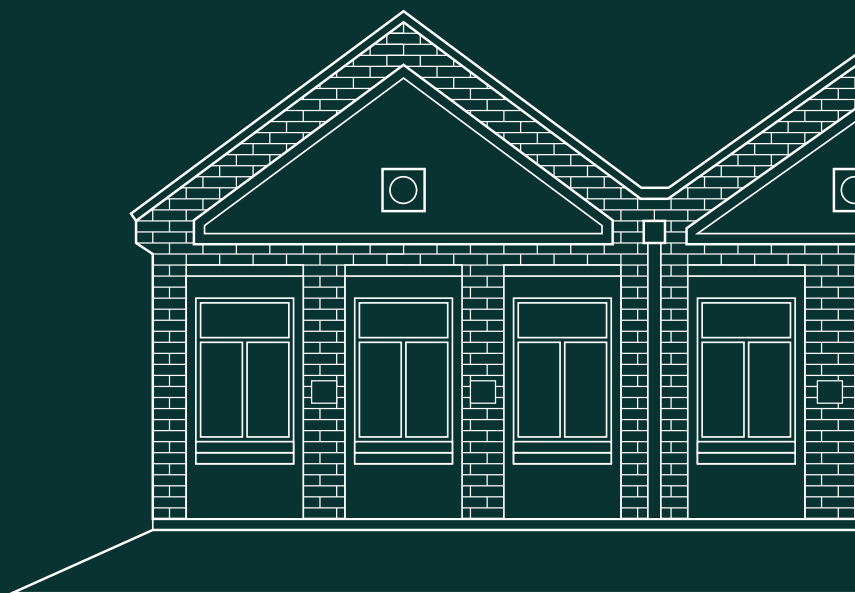
Our Regeneration Commitment

By choosing Barton Bespoke you are playing a part in a very important regeneration project.

We are proud to be partnered with United Nations Eastbourne on a crucial planting initiative in Uganda. Known locally in Swahili as the Mvule tree, Iroko's carbon capture and carbon sequestration is considered by scientists as exceptional, and possibly uniquely so in the world. It's a remarkable tree that needs replenishing.

We have committed to planting over 14,000 new Mvule (Iroko) trees ever year, are constantly monitoring both our usage and supply chain, and plan to plant even more.

You can learn more about this and other UNE projects at <https://www.unaeastbourne.org>.



Proudly designed and
manufactured in Great Britain

BARTONBESPOKE.CO.UK